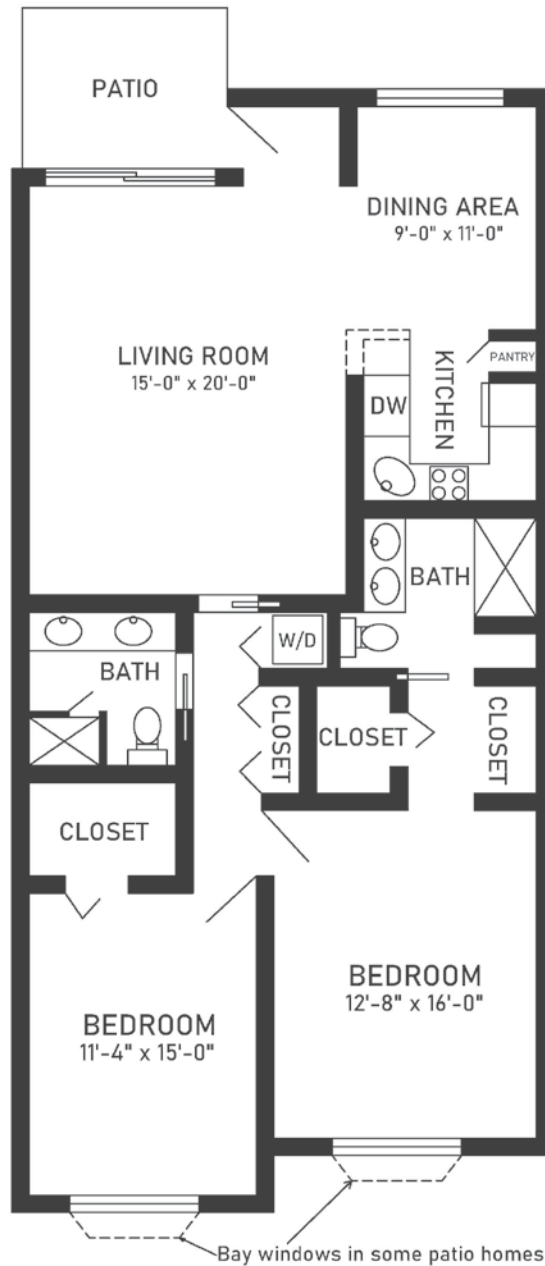


Patio Home  
Elm

1,272 sq. ft.

Dimensions are approximate.



2125 North Olive Avenue, Turlock, CA 95382 (209) 216-5696 CovLivingTurlock.org

Covenant Living Communities & Services is a ministry of the Evangelical Covenant Church and does not discriminate pursuant to the federal Fair Housing Act. All faiths and beliefs are welcome. RCFE License #500301453 COA# 133 Fees are effective through September 30, 2021. Rates are subject to change.

